

1 **FIRST FLOOR PLAN**
 3/64" = 1'-0"

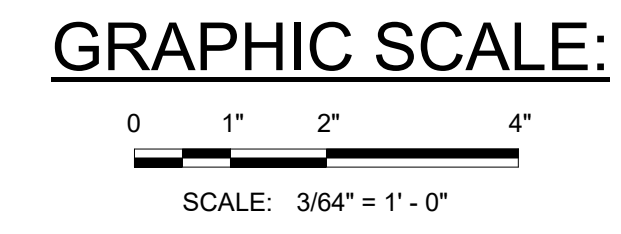
ROOM NO.	ROOM NAME	NSF (AS SHOWN)
100	CORRIDOR	4,631
100B	CORRIDOR	507
101	BREAK ROOM	416
102	LOGISTICS ASSISTANCE REPRESENTATIVES (LARS)	255
103	TECHNICAL LIBRARY	154
104	FIRE SUPPRESSION ROOM	1,080
105	FACILITY STORAGE	59
106	ELECTRICAL ROOM	300
107	MECHANICAL ROOM	880
108	JANITOR	48
109	MEN'S RESTROOM SHOWER & LOCKER ROOM	671
110	WOMEN'S RESTROOM SHOWER & LOCKER ROOM	319
111	ELEVATOR EQUIPMENT ROOM	58
112	TELECOMM EQUIPMENT ROOM (TER)	142
113	MC ORDERLY ROOM	501
113A	MC COMPONENT REPAIR PLATOON OFFICE	150
113B	MC COMMANDER OFFICE	152
113C	MC 1ST SERGEANT OFFICE	152
113D	MC AIRFRAME REPAIR PLATOON OFFICE	150
114	PNEUDRAULICS	609
115	COMPRESSOR ROOM	321
116	MECHANICAL ROOM	704
117	BLADE REPAIR SHOP	660
118	STRUCTURAL REPAIR SHOP	1,400
119	POWER PLANT / POWERTRAIN SHOP	1,745
119A	NON-DESTRUCTIVE INSPECTION (NDI) ROOM	100
120	SYSTEMS REPAIR SHOP	1,495
120A	SHOP SECTION HQ	150
120B	COMSEC SECURE STORAGE	300
120C	ARMS VAULT - AIRCRAFT MOUNTED WEAPONS	301
121	REPAIR SECTION WORKROOM	1,285

ROOM NO.	ROOM NAME	NSF (AS SHOWN)
122	SPECIAL TOOLS ROOM	700
123	QUALITY CONTROL	1,197
123A	QUALITY CONTROL OFFICE	120
124	SIPRNET ROOM	80
125	ULLS-A EQUIPMENT ROOM	80
126	PRODUCTION CONTROL	1,200
126A	PRODUCTION CONTROL OFFICE	150
127	MAINTENANCE TEST PILOT OFFICE	200
128	CREW CHIEF WORKROOM	1,100
129	MAINTENANCE TEST PILOT OFFICE	200
130	CREW CHIEF WORKROOM	1,102
131	MAINTENANCE TEST PILOT OFFICE	200
132	CREW CHIEF WORKROOM	1,102
133	TELECOMM ROOM (TR)	80
134	RECYLEABLE STORAGE	155
135	ELECTRICAL ROOM	100
136	MECHANICAL ROOM	1,017
137	AC ARMS VAULT	407
138	AC ARMS VAULT	407
139	AC ARMS VAULT	407
140	MC ARMS VAULT	434
141	AC UNIT STORAGE	423
141A	AC NBC STORAGE	100
141B	AC NON-SENSITIVE SECURE STORAGE	180
141C	AC COMMUNICATIONS STORAGE	100
142	AC UNIT STORAGE	422
142A	AC NBC STORAGE	100
142B	AC NON-SENSITIVE SECURE STORAGE	180
142C	AC COMMUNICATIONS STORAGE	100
143	AC UNIT STORAGE	422
143A	AC NBC STORAGE	100

ROOM NO.	ROOM NAME	NSF (AS SHOWN)
143B	AC NON-SENSITIVE SECURE STORAGE	180
143C	AC COMMUNICATIONS STORAGE	100
144	MC UNIT STORAGE	461
144A	MC NBC STORAGE	140
144B	MC NON-SENSITIVE SECURE STORAGE	200
144C	MC COMMUNICATIONS STORAGE	140
145	CONTRACTOR LOGISTICS SUPPORT (CLS)	700
146	LOGISTICS ASSISTANCE REPRESENTATIVES (LARS)	210
147	LACTATION ROOM	173
148	JANITOR	50
149	WOMEN'S RESTROOM	204
150	MEN'S RESTROOM	227
151	TELECOMM ROOM (TR)	82
152	AIRCRAFT PARTS SUPPLY	2,088
152A	AIRCRAFT PARTS SUPPLY OFFICE	512
153	AIRCRAFT MAINTENANCE BAY	42,173
S101	STAIR 1	255
S102	STAIR 2	249
S103	STAIR 3	362

FLOOR	AREA DESCRIPTION	GSF (AS SHOWN)
FIRST	ADMINISTRATIVE AND SHOP AREAS	40,000
FIRST	AIRCRAFT MAINTENANCE BAY	43,000
FIRST	AIRCRAFT PARTS SUPPLY	2,800
SECOND	ADMINISTRATIVE	31,600
TOTAL		117,500

NOTES:
 MAXIMUM ALLOWABLE AREA (GSF) = 119,500 S.F. THIS ALLOWANCE INCLUDES COVERED CANOPIES CALCULATED AT 1/2 SQUARE FOOTAGE.
 THE FLOOR PLAN INDICATES THE ARMY STANDARD DESIGN IN SCHEMATIC FORM. THE DESIGNER OF RECORD (D.O.R.) IS ALLOWED TO MAKE ADJUSTMENTS FOR THE EXTERIOR FACADE/ARCHITECTURE THEME, AND/OR TO ACCOMMODATE SPECIFIC BUILDING ENGINEERING SYSTEMS (STRUCTURAL, MECHANICAL, ELECTRICAL, FIRE PROTECTION, SUSTAINABLE DESIGN, ETC). THESE ADJUSTMENTS WILL BE EVALUATED BY THE CENTER OF STANDARDIZATION (CoS) DURING ITS COMPLIANCE REVIEW.
 THE OVERALL BUILDING DIMENSIONS, AND THE VALUE FOR THE GROSS BUILDING AREA IS FOR THE STANDARD LAYOUT SHOWN AND IS PREDICATED ON AN ASSUMED EXTERIOR WALL THICKNESS OF 16" INCHES. IT IS UNDERSTOOD THAT THE ACTUAL GROSS BUILDING AREA WILL VARY DEPENDING ON THE WALL SYSTEM/MATERIAL SELECTED FOR A SPECIFIC PROJECT. A REDUCED OVERALL GROSS AREA IS PERMISSIBLE IF ALL NET PROGRAM REQUIREMENTS AND ADJACENCIES ARE SATISFIED, BUT IN NO CASE MAY THE MAXIMUM GROSS AREA FOR THE FACILITY BE EXCEEDED, UNLESS NOTED OTHERWISE, ALL DIMENSIONS ARE TO THE OUTFACE OF WALLS.
 FOR PLANNING PURPOSES, THE FLOOR TO FLOOR HEIGHT IS DRAWN AT 16 FEET IN THE REVIT FILE. THE DESIGNER OF RECORD SHOULD RE-EVALUATE THE FLOOR TO FLOOR HEIGHT BASED ON DESIGN CONDITIONS FOR EACH HANGAR AND ADJUST DESIGN ELEMENTS ACCORDINGLY.



MARKS	DATE	DESCRIPTION

DESIGN BY: [blank]	DESIGN DATE: [blank]
DRAWN BY: SMITH	SOLICITATION NO.: [blank]
CHKD BY: GRIFFIN	CONTRACT NO.: [blank]
DATE: 2/27/2020	PLOT DATE: [blank]
FILE NUMBER: [blank]	FILE NAME: [blank]
SIZE: 22" x 34"	SCALE: 3/64" = 1'-0"

US ARMY CORPS OF ENGINEERS
 MOBILE DISTRICT
 MOBILE, ALABAMA

DEPARTMENT OF THE ARMY
 FACILITIES STANDARDIZATION PROGRAM
**ATTACK/ASSAULT BATTALION (AAB)
 AIRCRAFT MAINTENANCE HANGAR**
 FIRST FLOOR PLAN

SHEET IDENTIFICATION
A-101
 SHEET OF 0

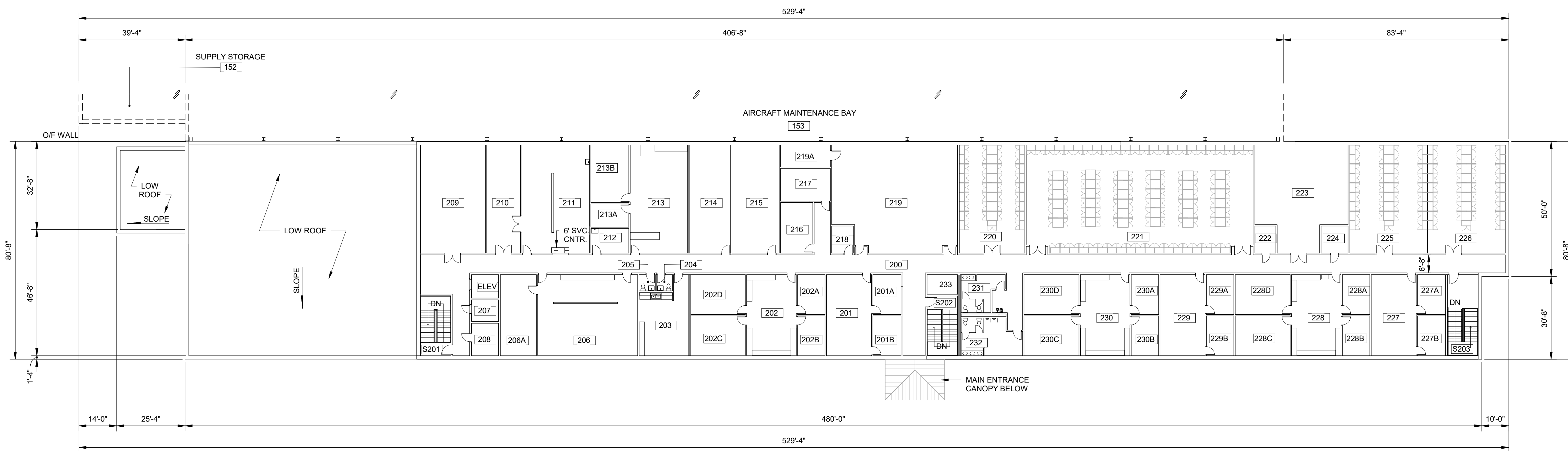
A A-101-

D

C

B

A



1 SECOND FLOOR PLAN
A-102 3/64" = 1'-0"

ROOM NO.	ROOM NAME	NSF (AS SHOWN)
200	CORRIDOR	3,565
201	AC ORDERLY ROOM	501
201A	AC 1ST SERGEANT OFFICE	154
201B	AC COMMANDER OFFICE	154
202	AC PILOT WORKROOM	551
202A	AC TACTICAL OPERATIONS OFFICE	150
202B	AC AVIATION SAFETY OFFICE	150
202C	AC PLATOON OFFICE	300
202D	AC STANDARDIZATION OFFICE	300
203	BREAK ROOM	448
204	UNISEX REST ROOM	36
205	UNISEX REST ROOM	36
206	FLIGHT PLANNING	1,099
206A	SECURE PLANNING ROOM	400
207	ELECTRICAL ROOM	80
208	TELECOMM ROOM (TR)	120
209	MECHANICAL ROOM	963
210	AVIATION LIFE SUPPORT EQUIPMENT STORAGE (ALSE)	500
211	AVIATION LIFE SUPPORT EQUIPMENT SHOP (ALSE)	1,000
212	JANITOR/FACILITY STORAGE	128
213	FLIGHT OPERATIONS	846
213A	FLIGHT OPERATIONS OFFICE	121
213B	FLIGHT OPERATIONS SECURE STORAGE	300
214	DISTRIBUTED/COMPUTER BASED TRAINING (DT/CBT) ROOM	600
215	PILOT LOCKER ROOM	700
216	CONFERENCE/TRAINING ROOM	223
217	CONFERENCE/TRAINING ROOM	223
218	SIPRNET ROOM	80
219	PILOT BRIEFING ROOM	1,736
219A	PILOT BRIEFING ROOM STORAGE	150

ROOM NO.	ROOM NAME	NSF (AS SHOWN)
220	TA-50 LOCKER ROOM (AC)	997
221	TA-50 LOCKER ROOM (MC)	3,309
222	TELECOMM ROOM (TR)	78
223	MECHANICAL ROOM	1,182
224	ELECTRICAL ROOM	100
225	TA-50 LOCKER ROOM (AC)	1,148
226	TA-50 LOCKER ROOM (AC)	1,148
227	AC ORDERLY ROOM	500
227A	AC 1ST SERGEANT OFFICE	150
227B	AC COMMANDER OFFICE	150
228	AC PILOT WORKROOM	550
228A	AC TACTICAL OPERATIONS OFFICE	150
228B	AC AVIATION SAFETY OFFICE	150
228C	AC PLATOON OFFICE	300
228D	AC STANDARDIZATION OFFICE	300
229	AC ORDERLY ROOM	500
229A	AC 1ST SERGEANT OFFICE	150
229B	AC COMMANDER OFFICE	150
230	AC PILOT WORKROOM	550
230A	AC TACTICAL OPERATIONS OFFICE	150
230B	AC AVIATION SAFETY OFFICE	150
230C	AC PLATOON OFFICE	300
230D	AC STANDARDIZATION OFFICE	300
231	WOMEN'S RESTROOM	180
232	MEN'S RESTROOM	284
233	TELECOMM ROOM (TR)	82
S201	STAIR 1	251
S202	STAIR 2	249
S203	STAIR 3	362

FLOOR	AREA DESCRIPTION	GSF (AS SHOWN)
FIRST	ADMINISTRATIVE AND SHOP AREAS	40,000
FIRST	AIRCRAFT MAINTENANCE BAY	43,000
FIRST	AIRCRAFT PARTS SUPPLY	2,800
SECOND	ADMINISTRATIVE	31,600
TOTAL		117,500

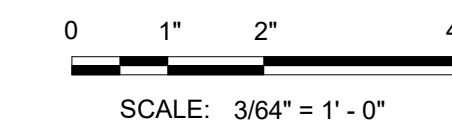
NOTES:
MAXIMUM ALLOWABLE AREA (GSF) = 119,500 S.F. THIS ALLOWANCE INCLUDES COVERED CANOPIES CALCULATED AT 1/2 SQUARE FOOTAGE.

THE FLOOR PLAN INDICATES THE ARMY STANDARD DESIGN IN SCHEMATIC FORM. THE DESIGNER OF RECORD (D.O.R.) IS ALLOWED TO MAKE ADJUSTMENTS FOR THE EXTERIOR FACADE/ARCHITECTURE THEME, AND/OR TO ACCOMMODATE SPECIFIC BUILDING ENGINEERING SYSTEMS (STRUCTURAL, MECHANICAL, ELECTRICAL, FIRE PROTECTION, SUSTAINABLE DESIGN, ETC.). THESE ADJUSTMENTS WILL BE EVALUATED BY THE CENTER OF STANDARDIZATION (CoS) DURING ITS COMPLIANCE REVIEW.

THE OVERALL BUILDING DIMENSIONS, AND THE VALUE FOR THE GROSS BUILDING AREA IS FOR THE STANDARD LAYOUT SHOWN AND IS PREDICATED ON AN ASSUMED EXTERIOR WALL THICKNESS OF 16" INCHES. IT IS UNDERSTOOD THAT THE ACTUAL GROSS BUILDING AREA WILL VARY DEPENDING ON THE WALL SYSTEM/MATERIAL SELECTED FOR A SPECIFIC PROJECT. A REDUCED OVERALL GROSS AREA IS PERMISSIBLE IF ALL NET PROGRAM REQUIREMENTS AND ADJACENCIES ARE SATISFIED, BUT IN NO CASE MAY THE MAXIMUM GROSS AREA FOR THE FACILITY BE EXCEEDED, UNLESS NOTED OTHERWISE, ALL DIMENSIONS ARE TO THE OUTFACE OF WALLS.

FOR PLANNING PURPOSES, THE FLOOR TO FLOOR HEIGHT IS DRAWN AT 16 FEET IN THE REVIT FILE. THE DESIGNER OF RECORD SHOULD RE-EVALUATE THE FLOOR TO FLOOR HEIGHT BASED ON DESIGN CONDITIONS FOR EACH HANGAR AND ADJUST DESIGN ELEMENTS ACCORDINGLY.

GRAPHIC SCALE:



DATE	DESCRIPTION	MARK

DESIGN BY:	CRG BY:	PLOT DATE:	CONTRACT NO.:
DRAWN BY:	SMITH	2/27/2020	
SMIT BY:	SMITH	1/31/23 PM	FILE NUMBER:
PLOT SCALE:	3/64" = 1'-0"		FILE NAME:
SIZE:	22" x 34"		

US ARMY CORPS OF ENGINEERS
MOBILE DISTRICT
MOBILE, ALABAMA

DEPARTMENT OF THE ARMY
FACILITIES STANDARDIZATION PROGRAM
**ATTACK/ASSAULT BATTALION (AAB)
AIRCRAFT MAINTENANCE HANGAR**
SECOND FLOOR PLAN

SHEET IDENTIFICATION
A-102
SHEET OF 0

FURNITURE AND FIXTURE SCHEDULE

Table with 2 columns: MARK, DESCRIPTION. Lists items such as SR2 Rack, CH1 Chair, CH2 Stool, etc.

FURNITURE AND FIXTURE SCHEDULE

Table with 2 columns: MARK, DESCRIPTION. Lists items such as MB5 Map Board, SC1 Cabinet, SC2 Cabinet, etc.

EQUIPMENT SCHEDULE

Table with 2 columns: MARK, DESCRIPTION. Lists items such as AP1, AP3, AP4, AP5, AP6, etc.

NOTE: 1. EQUIPMENT (EQs) LISTED IN THIS TABLE ARE MISSION UNIQUE EQUIPMENT (MUE) PROVIDED BY THE END USER. UTILITY AND CONNECTIONS INCLUDING POWER, COMM AND PLUMBING SHALL BE PROVIDED AS REQUIRED TO SUPPORT EACH EQUIPMENT.



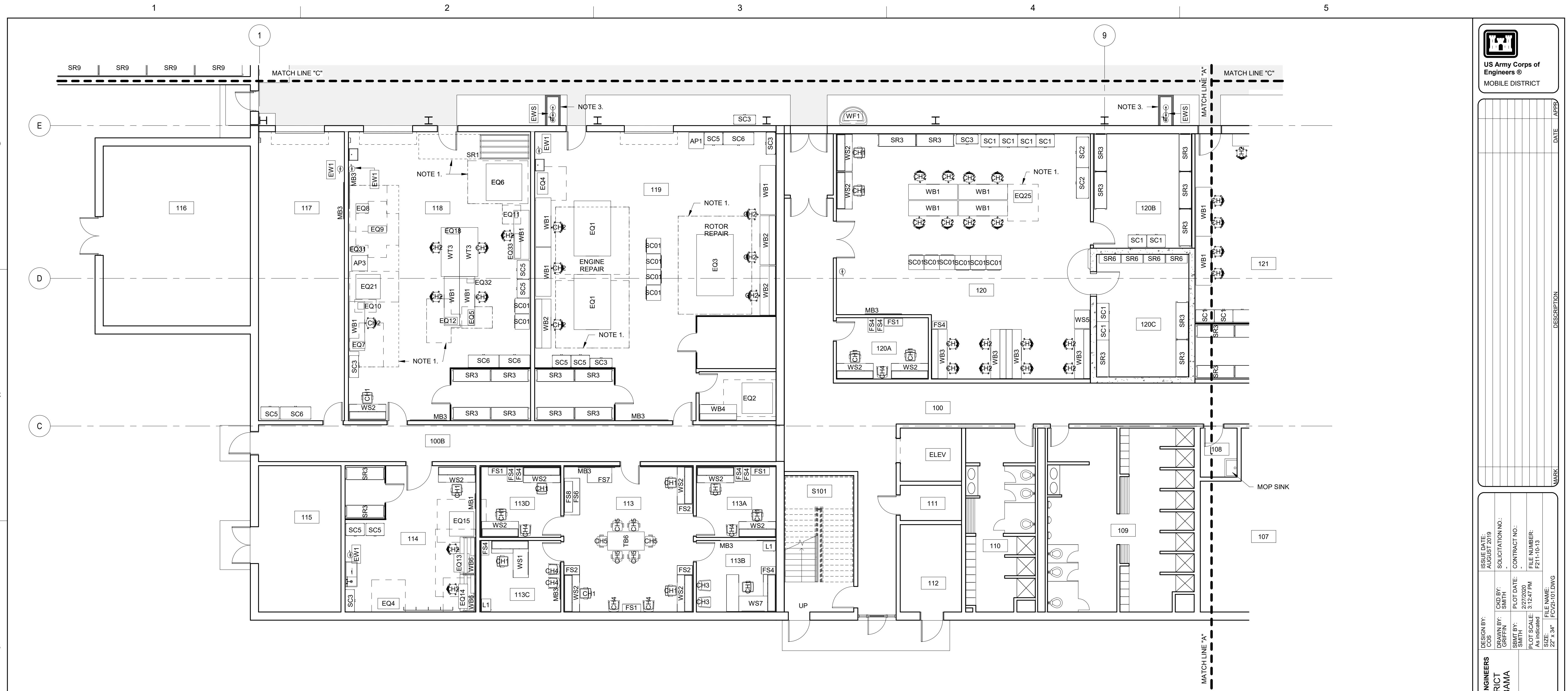
US Army Corps of Engineers MOBILE DISTRICT

Vertical table with columns: MARK, DESCRIPTION, DATE. Contains a grid of empty rows.

Metadata table with fields: DESIGNED BY, DRAWN BY, CHECKED BY, PLOT DATE, FILE NAME, etc.

DEPARTMENT OF THE ARMY FACILITIES STANDARDIZATION PROGRAM ATTACK/ASSAULT BATTALION (AAB) AIRCRAFT MAINTENANCE HANGAR FURNITURE, FIXTURE AND EQUIPMENT SCHEDULES

SHEET IDENTIFICATION I-100 SHEET OF 0



1 FF&E PLAN - PART "A"
 I-101 1/8" = 1'-0"

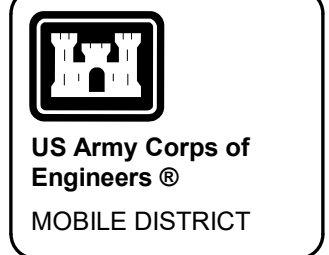
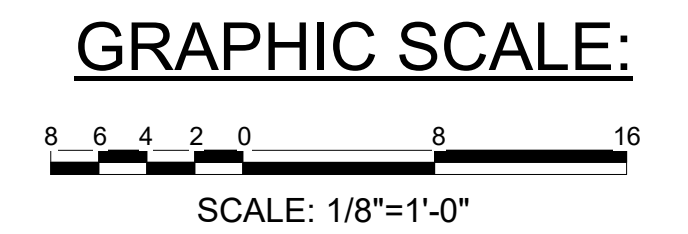
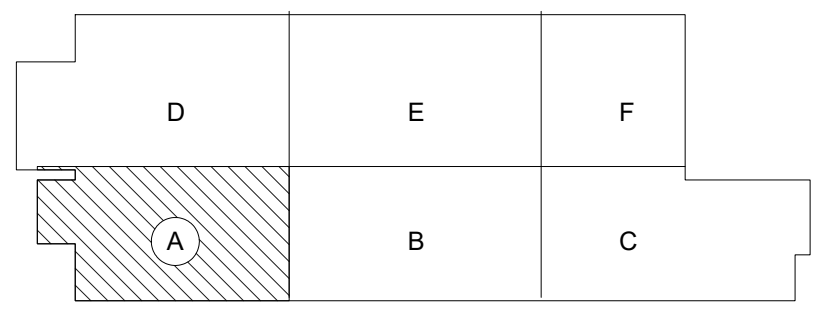
ROOM NO.	ROOM NAME
100	CORRIDOR
100B	CORRIDOR
101	BREAK ROOM
102	LOGISTICS ASSISTANCE REPRESENTATIVES (LARS)
103	TECHNICAL LIBRARY
104	FIRE SUPPRESSION ROOM
105	FACILITY STORAGE
106	ELECTRICAL ROOM
107	MECHANICAL ROOM
108	JANITOR
109	MEN'S RESTROOM SHOWER & LOCKER ROOM
110	WOMEN'S RESTROOM SHOWER & LOCKER ROOM
111	ELEVATOR EQUIPMENT ROOM
112	TELECOMM EQUIPMENT ROOM (TER)
113	MC ORDERLY ROOM
113A	MC COMPONENT REPAIR PLATOON OFFICE
113B	MC COMMANDER OFFICE
113C	MC 1ST SERGEANT OFFICE
113D	MC AIRFRAME REPAIR PLATOON OFFICE
114	PNEUDRAULICS
115	COMPRESSOR ROOM

ROOM NO.	ROOM NAME
116	MECHANICAL ROOM
117	BLADE REPAIR SHOP
118	STRUCTURAL REPAIR SHOP
119	POWER PLANT / POWERTRAIN SHOP
119A	NON-DSTRUCTIVE INSPECTION (NDI) ROOM
120	SYSTEMS REPAIR SHOP
120A	SHOP SECTION HQ
120B	COMSEC SECURE STORAGE
120C	ARMS VAULT - AIRCRAFT MOUNTED WEAPONS
121	REPAIR SECTION WORKROOM
122	SPECIAL TOOLS ROOM
123	QUALITY CONTROL
123A	QUALITY CONTROL OFFICE
124	SIPRNET ROOM
125	ULLS-A EQUIPMENT ROOM
126	PRODUCTION CONTROL
126A	PRODUCTION CONTROL OFFICE
127	MAINTENANCE TEST PILOT OFFICE
128	CREW CHIEF WORKROOM
129	MAINTENANCE TEST PILOT OFFICE
130	CREW CHIEF WORKROOM

ROOM NO.	ROOM NAME
131	MAINTENANCE TEST PILOT OFFICE
132	CREW CHIEF WORKROOM
133	TELECOMM ROOM (TR)
134	RECYCLEABLE STORAGE
135	ELECTRICAL ROOM
136	MECHANICAL ROOM
137	AC ARMS VAULT
138	AC ARMS VAULT
139	AC ARMS VAULT
140	MC ARMS VAULT
141	AC UNIT STORAGE
141A	AC NBC STORAGE
141B	AC NON-SENSITIVE SECURE STORAGE
141C	AC COMMUNICATIONS STORAGE
142	AC UNIT STORAGE
142A	AC NBC STORAGE
142B	AC NON-SENSITIVE SECURE STORAGE
142C	AC COMMUNICATIONS STORAGE
143	AC UNIT STORAGE
143A	AC NBC STORAGE
143B	AC NON-SENSITIVE SECURE STORAGE

ROOM NO.	ROOM NAME
143C	AC COMMUNICATIONS STORAGE
144	MC UNIT STORAGE
144A	MC NBC STORAGE
144B	MC NON-SENSITIVE SECURE STORAGE
144C	MC COMMUNICATIONS STORAGE
145	CONTRACTOR LOGISTICS SUPPORT (CLS)
146	LOGISTICS ASSISTANCE REPRESENTATIVES (LARS)
147	LACTATION ROOM
148	JANITOR
149	WOMEN'S RESTROOM
150	MEN'S RESTROOM
151	TELECOMM ROOM (TR)
152	AIRCRAFT PARTS SUPPLY
152A	AIRCRAFT PARTS SUPPLY OFFICE
153	AIRCRAFT MAINTENANCE BAY
S101	STAIR 1
S102	STAIR 2
S103	STAIR 3

- NOTES:**
1. DELINEATES EQUIPMENT OR WORK AREA
 2. VENDING MACHINE OR REFRIGERATOR AREA
 3. SAFETY EQUIPMENT CLEARANCE AREA



APPROVED	DATE	DESCRIPTION	MARK

DESIGNED BY: P. SUTHERLAND	APPROVED BY: S. GUSTY	DATE: 2/10/20
DRAWN BY: G. GRIFFIN	CHECKED BY: S. SMITH	CONTRACT NO.: F211-10-13
PROJECT NO.: 2022020	PLOT DATE: 3/12/20	FILE NUMBER: F211-10-13
SCALE: As indicated	FILE NAME: FCV21-101.DWG	SIZE: 22" x 34"

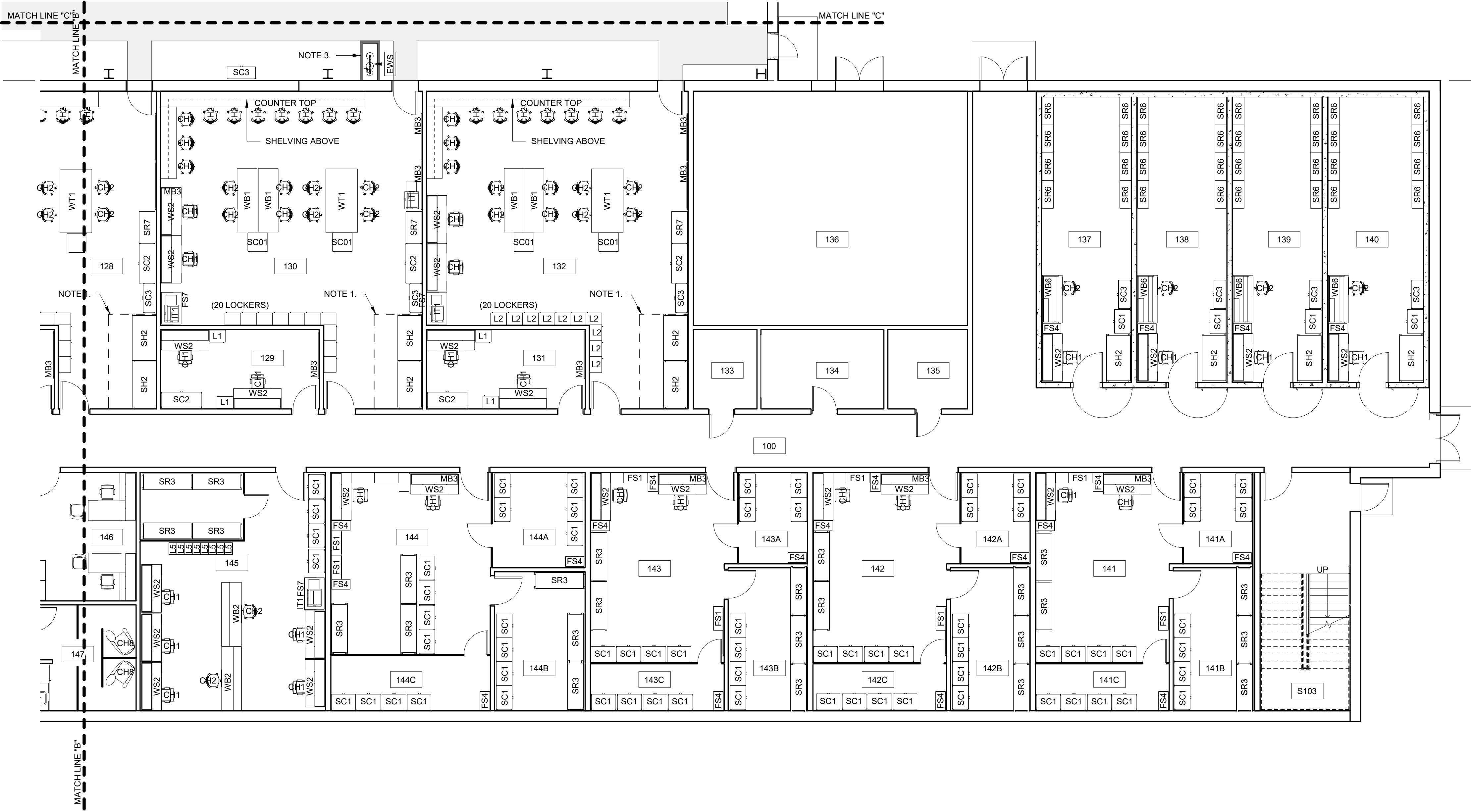
DEPARTMENT OF THE ARMY
 FACILITIES STANDARDIZATION PROGRAM
 ATTACK/ASSAULT BATTALION (AAB)
 AIRCRAFT MAINTENANCE HANGAR
 FF&E PLAN - FIRST FLOOR - PART "A"

SHEET IDENTIFICATION
I-101
 SHEET OF 0

DATE	DESCRIPTION	MARK	DATE	APPRO

DESIGNED BY: PCSSN: JTE	CHECKED BY: SMITH	SUBMIT DATE: 2/27/2010	SOLICITATION NO.:
DRAWN BY: GRiffin	PLOTTED BY: SMITH	PLOT DATE: 3/14/10 PM	CONTRACT NO.:
FILE NAME: FCV21-103.DWG	FILE NUMBER: F21-10-13	AS INDICATED	

DEPARTMENT OF THE ARMY
FACILITIES STANDARDIZATION PROGRAM
ATTACK/ASSAULT BATTALION (AAB)
AIRCRAFT MAINTENANCE HANGAR
FF&E PLAN - FIRST FLOOR - PART "C"



1 FF&E PLAN PART "C"
I-103 1/8" = 1'-0"

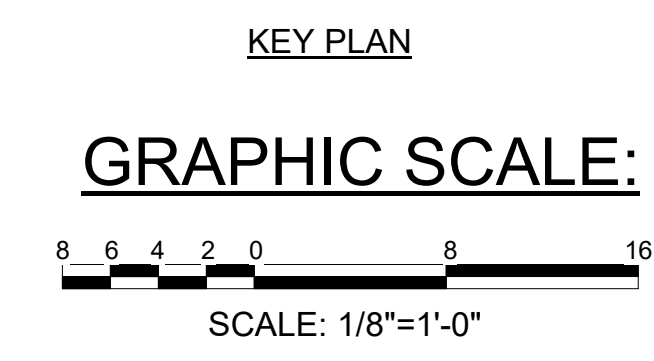
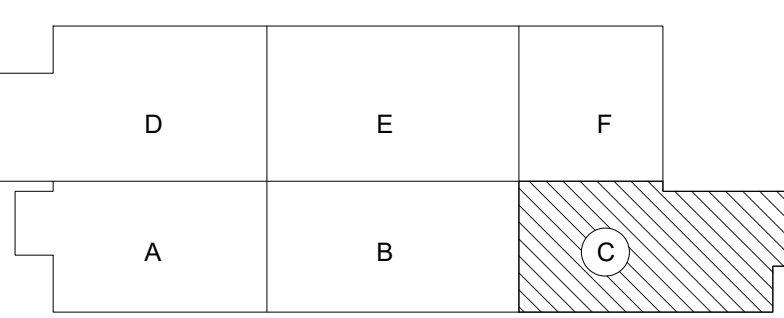
ROOM NO.	ROOM NAME
100	CORRIDOR
100B	CORRIDOR
101	BREAK ROOM
102	LOGISTICS ASSISTANCE REPRESENTATIVES (LARS)
103	TECHNICAL LIBRARY
104	FIRE SUPPRESSION ROOM
105	FACILITY STORAGE
106	ELECTRICAL ROOM
107	MECHANICAL ROOM
108	JANITOR
109	MEN'S RESTROOM SHOWER & LOCKER ROOM
110	WOMEN'S RESTROOM SHOWER & LOCKER ROOM
111	ELEVATOR EQUIPMENT ROOM
112	TELECOMM EQUIPMENT ROOM (TER)
113	MC ORDERLY ROOM
113A	MC COMPONENT REPAIR PLATOON OFFICE
113B	MC COMMANDER OFFICE
113C	MC 1ST SERGEANT OFFICE
113D	MC AIRFRAME REPAIR PLATOON OFFICE
114	PNEUDRAULICS
115	COMPRESSOR ROOM

ROOM NO.	ROOM NAME
116	MECHANICAL ROOM
117	BLADE REPAIR SHOP
118	STRUCTURAL REPAIR SHOP
119	POWER PLANT / POWERTRAIN SHOP
119A	NON-DSTRUCTIVE INSPECTION (NDI) ROOM
120	SYSTEMS REPAIR SHOP
120A	SHOP SECTION HQ
120B	COMSEC SECURE STORAGE
120C	ARMS VAULT - AIRCRAFT MOUNTED WEAPONS
121	REPAIR SECTION WORKROOM
122	SPECIAL TOOLS ROOM
123	QUALITY CONTROL
123A	QUALITY CONTROL OFFICE
124	SIPRNET ROOM
125	ULLS-A EQUIPMENT ROOM
126	PRODUCTION CONTROL
126A	PRODUCTION CONTROL OFFICE
127	MAINTENANCE TEST PILOT OFFICE
128	CREW CHIEF WORKROOM
129	MAINTENANCE TEST PILOT OFFICE
130	CREW CHIEF WORKROOM

ROOM NO.	ROOM NAME
131	MAINTENANCE TEST PILOT OFFICE
132	CREW CHIEF WORKROOM
133	TELECOMM ROOM (TR)
134	RECYCLEABLE STORAGE
135	ELECTRICAL ROOM
136	MECHANICAL ROOM
137	AC ARMS VAULT
138	AC ARMS VAULT
139	AC ARMS VAULT
140	MC ARMS VAULT
141	AC UNIT STORAGE
141A	AC NBC STORAGE
141B	AC NON-SENSITIVE SECURE STORAGE
141C	AC COMMUNICATIONS STORAGE
142	AC UNIT STORAGE
142A	AC NBC STORAGE
142B	AC NON-SENSITIVE SECURE STORAGE
142C	AC COMMUNICATIONS STORAGE
143	AC UNIT STORAGE
143A	AC NBC STORAGE
143B	AC NON-SENSITIVE SECURE STORAGE

ROOM NO.	ROOM NAME
143C	AC COMMUNICATIONS STORAGE
144	MC UNIT STORAGE
144A	MC NBC STORAGE
144B	MC NON-SENSITIVE SECURE STORAGE
144C	MC COMMUNICATIONS STORAGE
145	CONTRACTOR LOGISTICS SUPPORT (CLS)
146	LOGISTICS ASSISTANCE REPRESENTATIVES (LARS)
147	LACTATION ROOM
148	JANITOR
149	WOMEN'S RESTROOM
150	MEN'S RESTROOM
151	TELECOMM ROOM (TR)
152	AIRCRAFT PARTS SUPPLY
152A	AIRCRAFT PARTS SUPPLY OFFICE
153	AIRCRAFT MAINTENANCE BAY
S101	STAIR 1
S102	STAIR 2
S103	STAIR 3

- NOTES:**
1. DELINEATES EQUIPMENT OR WORK AREA
 2. VENDING MACHINE OR REFRIGERATOR AREA
 3. SAFETY EQUIPMENT CLEARANCE AREA

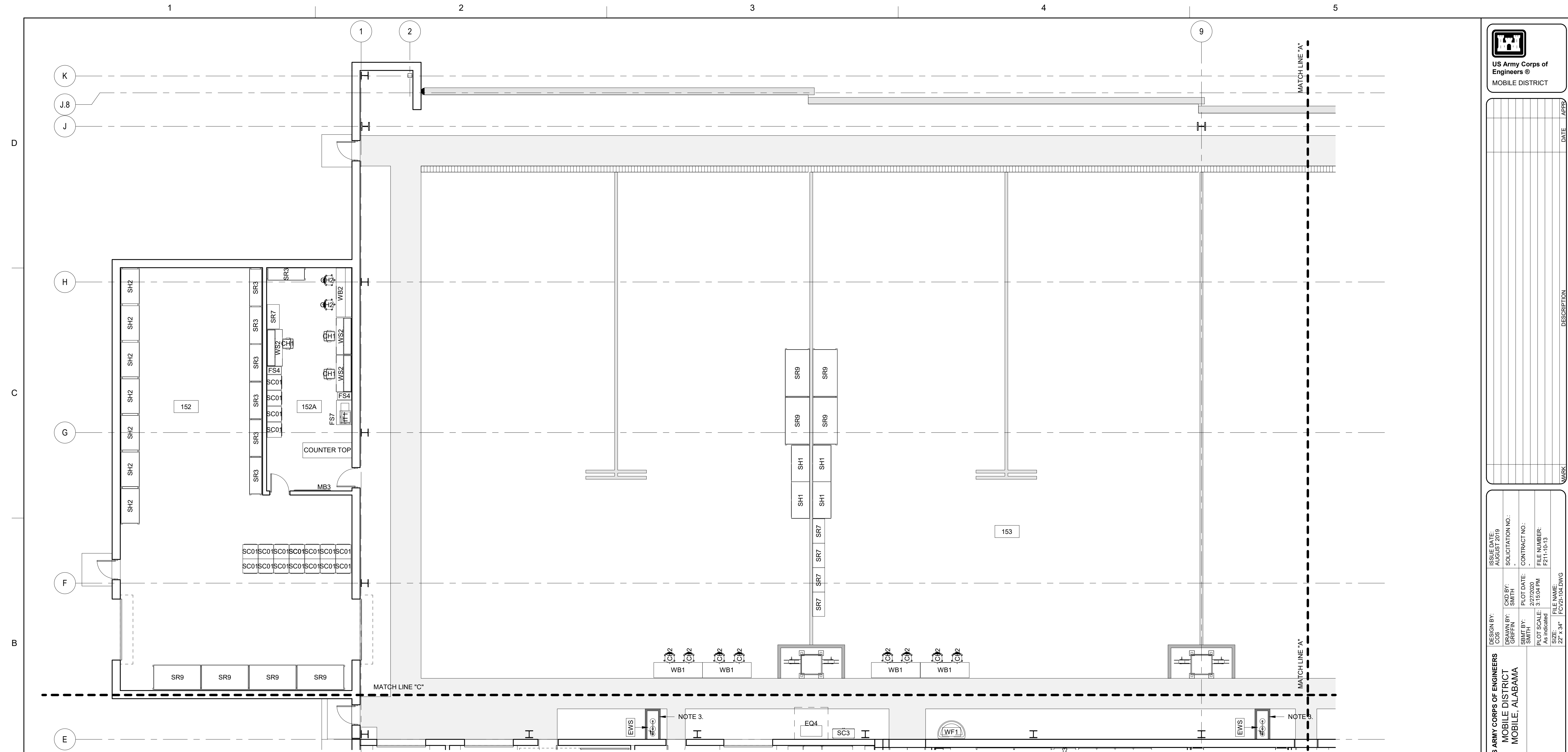


MARK	DESCRIPTION	DATE	APPROVED

DESIGN BY: PCSN BY: DRAWN BY: SRMT BY:	DESIGNED BY: GRiffin	CHKD BY: SMITH	SOLICITATION NO.:	PLOT DATE:	CONTRACT NO.:
FILE NAME: FCV21-104.DWG	FILE NUMBER: F211-10-13	FILE NUMBER: F211-10-13	FILE NUMBER: F211-10-13	FILE NUMBER: F211-10-13	FILE NUMBER: F211-10-13

DEPARTMENT OF THE ARMY
FACILITIES STANDARDIZATION PROGRAM
ATTACK/ASSAULT BATTALION (AAB)
AIRCRAFT MAINTENANCE HANGAR
FF&E PLAN - FIRST FLOOR - PART "D"

SHEET
IDENTIFICATION
I-104
SHEET OF 0



1 FF&E PLAN PART "D"
1/8" = 1'-0"

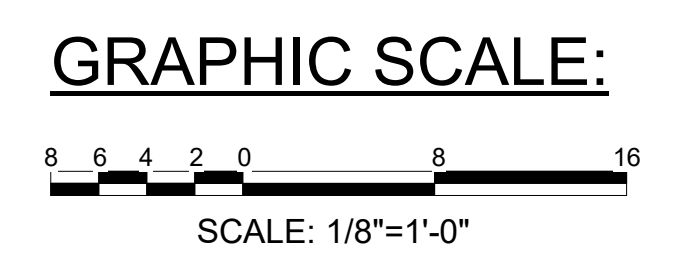
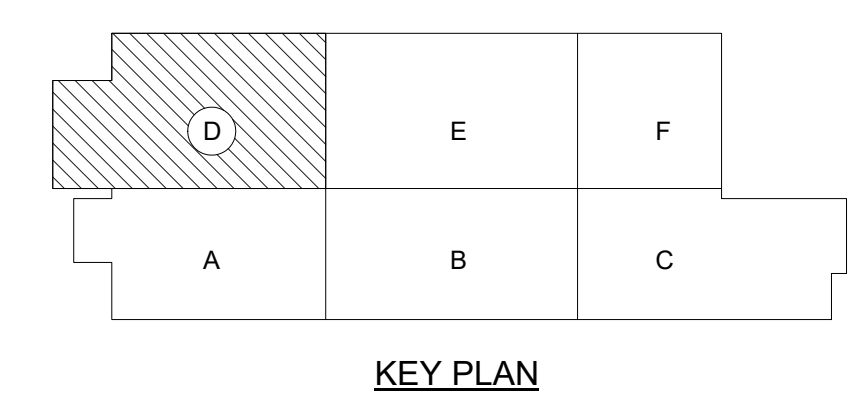
ROOM NO.	ROOM NAME
100	CORRIDOR
100B	CORRIDOR
101	BREAK ROOM
102	LOGISTICS ASSISTANCE REPRESENTATIVES (LARS)
103	TECHNICAL LIBRARY
104	FIRE SUPPRESSION ROOM
105	FACILITY STORAGE
106	ELECTRICAL ROOM
107	MECHANICAL ROOM
108	JANITOR
109	MEN'S RESTROOM SHOWER & LOCKER ROOM
110	WOMEN'S RESTROOM SHOWER & LOCKER ROOM
111	ELEVATOR EQUIPMENT ROOM
112	TELECOMM EQUIPMENT ROOM (TER)
113	MC ORDERLY ROOM
113A	MC COMPONENT REPAIR PLATOON OFFICE
113B	MC COMMANDER OFFICE
113C	MC 1ST SERGEANT OFFICE
113D	MC AIRFRAME REPAIR PLATOON OFFICE
114	PNEUDRAULICS
115	COMPRESSOR ROOM

ROOM NO.	ROOM NAME
116	MECHANICAL ROOM
117	BLADE REPAIR SHOP
118	STRUCTURAL REPAIR SHOP
119	POWER PLANT / POWERTRAIN SHOP
119A	NON-DESTRUCTIVE INSPECTION (NDI) ROOM
120	SYSTEMS REPAIR SHOP
120A	SHOP SECTION HQ
120B	COMSEC SECURE STORAGE
120C	ARMS VAULT - AIRCRAFT MOUNTED WEAPONS
121	REPAIR SECTION WORKROOM
122	SPECIAL TOOLS ROOM
123	QUALITY CONTROL
123A	QUALITY CONTROL OFFICE
124	SIPRNET ROOM
125	ULLS-A EQUIPMENT ROOM
126	PRODUCTION CONTROL
126A	PRODUCTION CONTROL OFFICE
127	MAINTENANCE TEST PILOT OFFICE
128	CREW CHIEF WORKROOM
129	MAINTENANCE TEST PILOT OFFICE
130	CREW CHIEF WORKROOM

ROOM NO.	ROOM NAME
131	MAINTENANCE TEST PILOT OFFICE
132	CREW CHIEF WORKROOM
133	TELECOMM ROOM (TR)
134	RECYCLEABLE STORAGE
135	ELECTRICAL ROOM
136	MECHANICAL ROOM
137	AC ARMS VAULT
138	AC ARMS VAULT
139	AC ARMS VAULT
140	MC ARMS VAULT
141	AC UNIT STORAGE
141A	AC NBC STORAGE
141B	AC NON-SENSITIVE SECURE STORAGE
141C	AC COMMUNICATIONS STORAGE
142	AC UNIT STORAGE
142A	AC NBC STORAGE
142B	AC NON-SENSITIVE SECURE STORAGE
142C	AC COMMUNICATIONS STORAGE
143	AC UNIT STORAGE
143A	AC NBC STORAGE
143B	AC NON-SENSITIVE SECURE STORAGE

ROOM NO.	ROOM NAME
143C	AC COMMUNICATIONS STORAGE
144	MC UNIT STORAGE
144A	MC NBC STORAGE
144B	MC NON-SENSITIVE SECURE STORAGE
144C	MC COMMUNICATIONS STORAGE
145	CONTRACTOR LOGISTICS SUPPORT (CLS)
146	LOGISTICS ASSISTANCE REPRESENTATIVES (LARS)
147	LACTATION ROOM
148	JANITOR
149	WOMEN'S RESTROOM
150	MEN'S RESTROOM
151	TELECOMM ROOM (TR)
152	AIRCRAFT PARTS SUPPLY
152A	AIRCRAFT PARTS SUPPLY OFFICE
153	AIRCRAFT MAINTENANCE BAY
S101	STAIR 1
S102	STAIR 2
S103	STAIR 3

- NOTES:**
1. DELINEATES EQUIPMENT OR WORK AREA
 2. VENDING MACHINE OR REFRIGERATOR AREA
 3. SAFETY EQUIPMENT CLEARANCE AREA





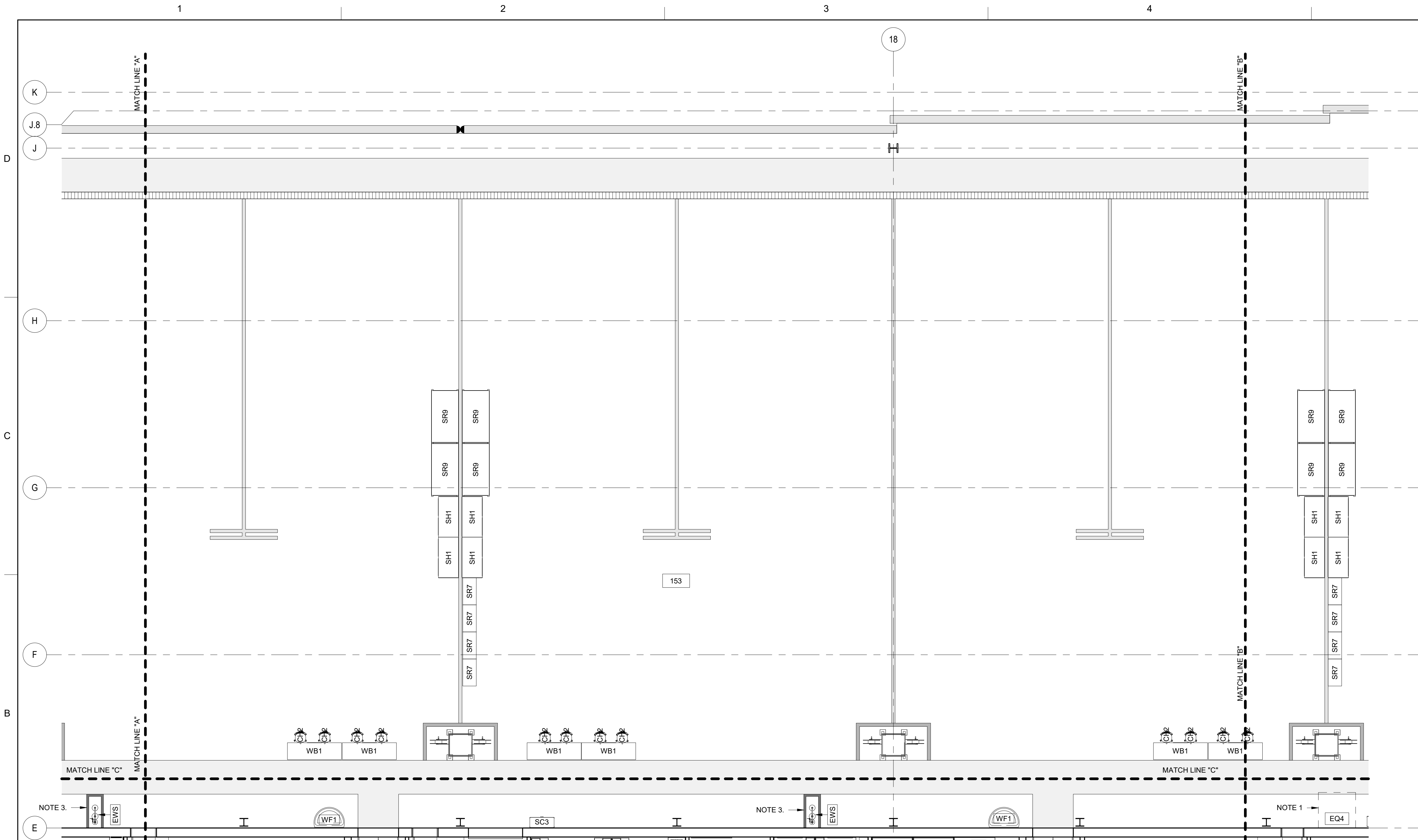
US Army Corps of Engineers®
MOBILE DISTRICT

MARK	DATE	DESCRIPTION

DESIGN BY: PCEN BY: MOBILE DISTRICT MOBILE, ALABAMA	CREW BY: SMITH	SOLICITATION NO.:
DRAWN BY: GRIFFIN	PLOT DATE:	CONTRACT NO.:
SRM BY: SMITH	2/27/2020	
As indicated	3:15:29 PM	FILE NUMBER: F211-10-13
FILE NAME: FCV21-105.DWG	FILE SIZE: 22" x 34"	

DEPARTMENT OF THE ARMY
FACILITIES STANDARDIZATION PROGRAM
ATTACK/ASSAULT BATTALION (AAB)
AIRCRAFT MAINTENANCE HANGAR
FF&E PLAN - FIRST FLOOR - PART "E"

SHEET
I-105
OF 0



1 FF&E PLAN PART "E"
1/8" = 1'-0"

ROOM NO.	ROOM NAME
100	CORRIDOR
100B	CORRIDOR
101	BREAK ROOM
102	LOGISTICS ASSISTANCE REPRESENTATIVES (LARS)
103	TECHNICAL LIBRARY
104	FIRE SUPPRESSION ROOM
105	FACILITY STORAGE
106	ELECTRICAL ROOM
107	MECHANICAL ROOM
108	JANITOR
109	MEN'S RESTROOM SHOWER & LOCKER ROOM
110	WOMEN'S RESTROOM SHOWER & LOCKER ROOM
111	ELEVATOR EQUIPMENT ROOM
112	TELECOMM EQUIPMENT ROOM (TER)
113	MC ORDERLY ROOM
113A	MC COMPONENT REPAIR PLATOON OFFICE
113B	MC COMMANDER OFFICE
113C	MC 1ST SERGEANT OFFICE
113D	MC AIRFRAME REPAIR PLATOON OFFICE
114	PNEUDRAULICS
115	COMPRESSOR ROOM

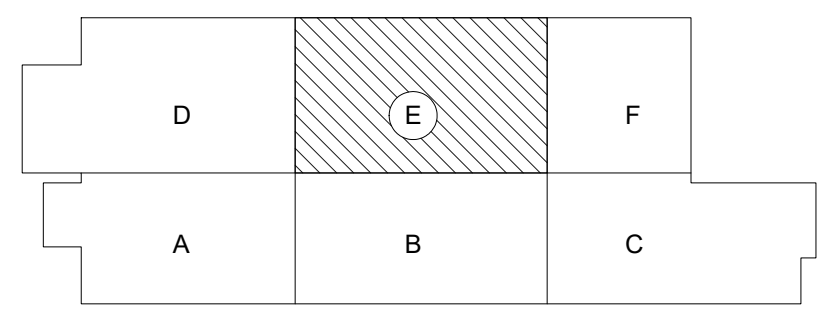
ROOM NO.	ROOM NAME
116	MECHANICAL ROOM
117	BLADE REPAIR SHOP
118	STRUCTURAL REPAIR SHOP
119	POWER PLANT / POWERTRAIN SHOP
119A	NON-DESTRUCTIVE INSPECTION (NDI) ROOM
120	SYSTEMS REPAIR SHOP
120A	SHOP SECTION HQ
120B	COMSEC SECURE STORAGE
120C	ARMS VAULT - AIRCRAFT MOUNTED WEAPONS
121	REPAIR SECTION WORKROOM
122	SPECIAL TOOLS ROOM
123	QUALITY CONTROL
123A	QUALITY CONTROL OFFICE
124	SIPRNET ROOM
125	ULLS-A EQUIPMENT ROOM
126	PRODUCTION CONTROL
126A	PRODUCTION CONTROL OFFICE
127	MAINTENANCE TEST PILOT OFFICE
128	CREW CHIEF WORKROOM
129	MAINTENANCE TEST PILOT OFFICE
130	CREW CHIEF WORKROOM

ROOM NO.	ROOM NAME
131	MAINTENANCE TEST PILOT OFFICE
132	CREW CHIEF WORKROOM
133	TELECOMM ROOM (TR)
134	RECYCLEABLE STORAGE
135	ELECTRICAL ROOM
136	MECHANICAL ROOM
137	AC ARMS VAULT
138	AC ARMS VAULT
139	AC ARMS VAULT
140	MC ARMS VAULT
141	AC UNIT STORAGE
141A	AC NBC STORAGE
141B	AC NON-SENSITIVE SECURE STORAGE
141C	AC COMMUNICATIONS STORAGE
142	AC UNIT STORAGE
142A	AC NBC STORAGE
142B	AC NON-SENSITIVE SECURE STORAGE
142C	AC COMMUNICATIONS STORAGE
143	AC UNIT STORAGE
143A	AC NBC STORAGE
143B	AC NON-SENSITIVE SECURE STORAGE

ROOM NO.	ROOM NAME
143C	AC COMMUNICATIONS STORAGE
144	MC UNIT STORAGE
144A	MC NBC STORAGE
144B	MC NON-SENSITIVE SECURE STORAGE
144C	MC COMMUNICATIONS STORAGE
145	CONTRACTOR LOGISTICS SUPPORT (CLS)
146	LOGISTICS ASSISTANCE REPRESENTATIVES (LARS)
147	LACTATION ROOM
148	JANITOR
149	WOMEN'S RESTROOM
150	MEN'S RESTROOM
151	TELECOMM ROOM (TR)
152	AIRCRAFT PARTS SUPPLY
152A	AIRCRAFT PARTS SUPPLY OFFICE
153	AIRCRAFT MAINTENANCE BAY
S101	STAIR 1
S102	STAIR 2
S103	STAIR 3

NOTES:

1. DELINEATES EQUIPMENT OR WORK AREA
2. VENDING MACHINE OR REFRIGERATOR AREA
3. SAFETY EQUIPMENT CLEARANCE AREA



KEY PLAN

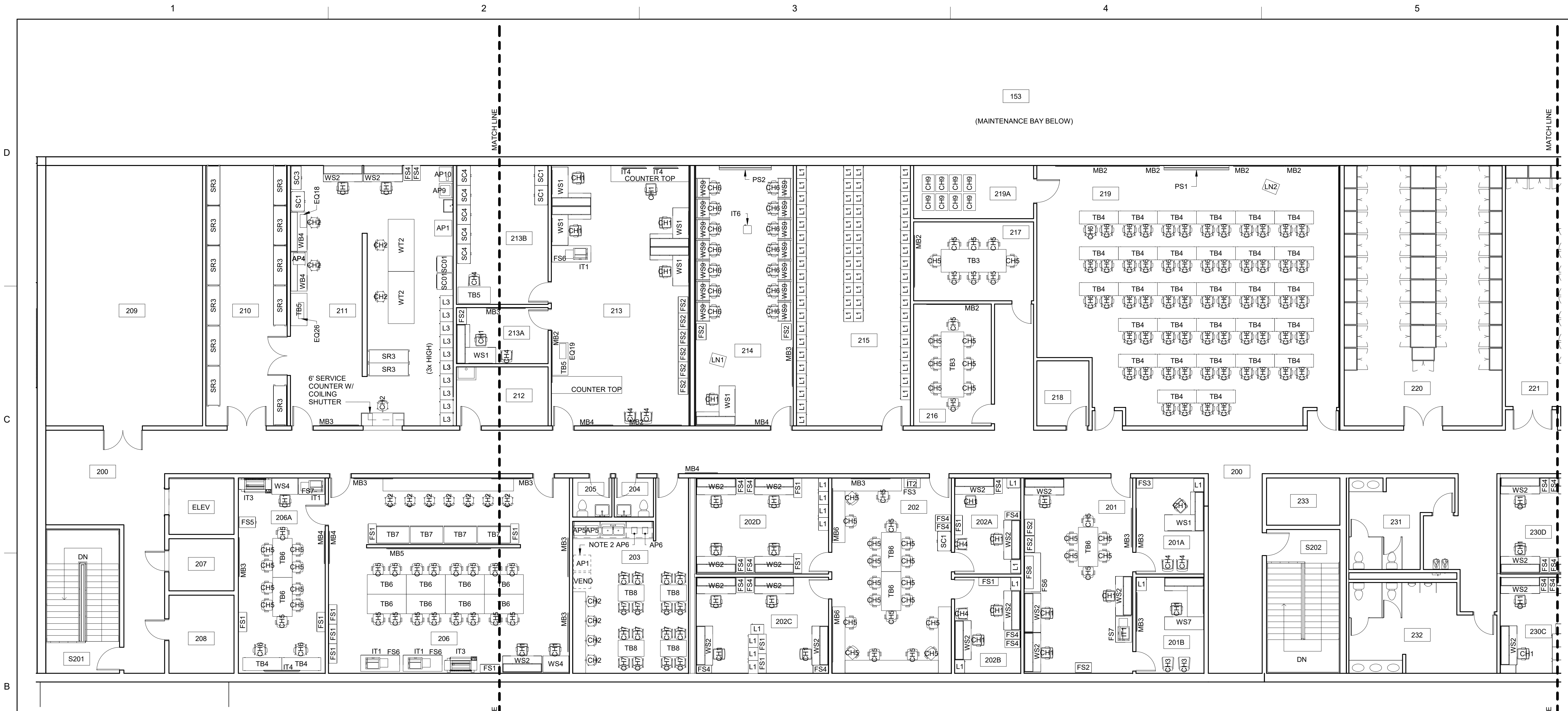
GRAPHIC SCALE:



SCALE: 1/8"=1'-0"

NOTIONAL PLAN - NOT FOR CONSTRUCTION

I-105-



1 SECOND FLOOR PLAN - PART "A"

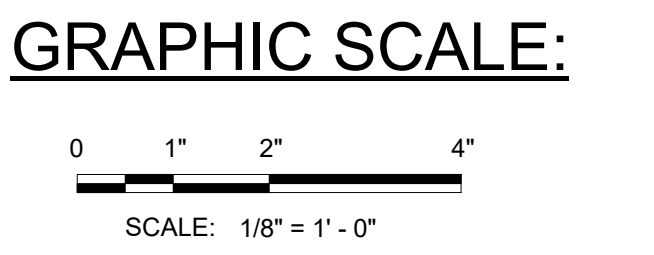
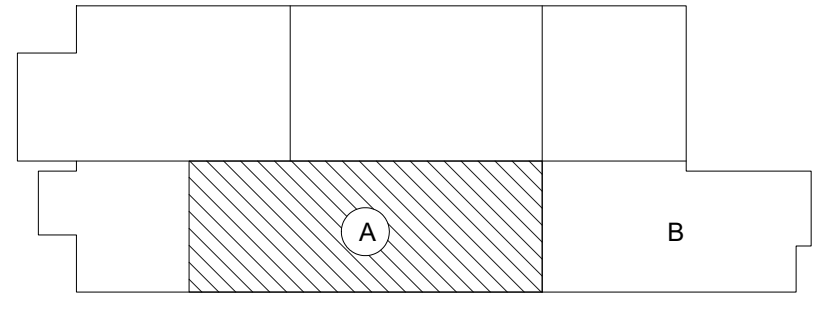
1/8" = 1'-0"

ROOM NO.	ROOM NAME
200	CORRIDOR
201	AC ORDERLY ROOM
201A	AC 1ST SERGEANT OFFICE
201B	AC COMMANDER OFFICE
202	AC PILOT WORKROOM
202A	AC TACTICAL OPERATIONS OFFICE
202B	AC AVIATION SAFETY OFFICE
202C	AC PLATOON OFFICE
202D	AC STANDARDIZATION OFFICE
203	BREAK ROOM
204	UNISEX REST ROOM
205	UNISEX REST ROOM
206	FLIGHT PLANNING
206A	SECURE PLANNING ROOM
207	ELECTRICAL ROOM
208	TELECOMM ROOM (TR)
209	MECHANICAL ROOM
210	AVIATION LIFE SUPPORT EQUIPMENT STORAGE (ALSE)
211	AVIATION LIFE SUPPORT EQUIPMENT SHOP (ALSE)
212	JANITOR/FACILITY STORAGE
213	FLIGHT OPERATIONS
213A	FLIGHT OPERATIONS OFFICE
213B	FLIGHT OPERATIONS SECURE STORAGE
214	DISTRIBUTED/COMPUTER BASED TRAINING (DT/CBT) ROOM

ROOM NO.	ROOM NAME
215	PILOT LOCKER ROOM
216	CONFERENCE/TRAINING ROOM
217	CONFERENCE/TRAINING ROOM
218	SIPRNET ROOM
219	PILOT BRIEFING ROOM
219A	PILOT BRIEFING ROOM STORAGE
220	TA-50 LOCKER ROOM (AC)
221	TA-50 LOCKER ROOM (MC)
222	TELECOMM ROOM (TR)
223	MECHANICAL ROOM
224	ELECTRICAL ROOM
225	TA-50 LOCKER ROOM (AC)
226	TA-50 LOCKER ROOM (AC)
227	AC ORDERLY ROOM
227A	AC 1ST SERGEANT OFFICE
227B	AC COMMANDER OFFICE
228	AC PILOT WORKROOM
228A	AC TACTICAL OPERATIONS OFFICE
228B	AC AVIATION SAFETY OFFICE
228C	AC PLATOON OFFICE
228D	AC STANDARDIZATION OFFICE
229	AC ORDERLY ROOM
229A	AC 1ST SERGEANT OFFICE
229B	AC COMMANDER OFFICE

ROOM NO.	ROOM NAME
230	AC PILOT WORKROOM
230A	AC TACTICAL OPERATIONS OFFICE
230B	AC AVIATION SAFETY OFFICE
230C	AC PLATOON OFFICE
230D	AC STANDARDIZATION OFFICE
231	WOMEN'S RESTROOM
232	MEN'S RESTROOM
233	TELECOMM ROOM (TR)
S201	STAIR 1
S202	STAIR 2
S203	STAIR 3

- NOTES:**
1. DELINEATES EQUIPMENT OR WORK AREA
 2. VENDING MACHINE OR REFRIGERATOR AREA
 3. SAFETY EQUIPMENT CLEARANCE AREA



US Army Corps of Engineers
 MOBILE DISTRICT

DESIGNED BY: ASHLEY, DATE: AUGUST 2010
DRAWN BY: GRIFFIN, DATE: 3/16/21 PM
CHECKED BY: SMITH, DATE: 3/16/21 PM
SCALE: As indicated
FILE NAME: FCV2-107.DWG

DEPARTMENT OF THE ARMY
FACILITIES STANDARDIZATION PROGRAM
ATTACK/ASSAULT BATTALION (AAB)
AIRCRAFT MAINTENANCE HANGAR
FF&E PLAN - SECOND FLOOR - PART "A"

SHEET IDENTIFICATION
I-107
SHEET OF 0

1

2

3

4

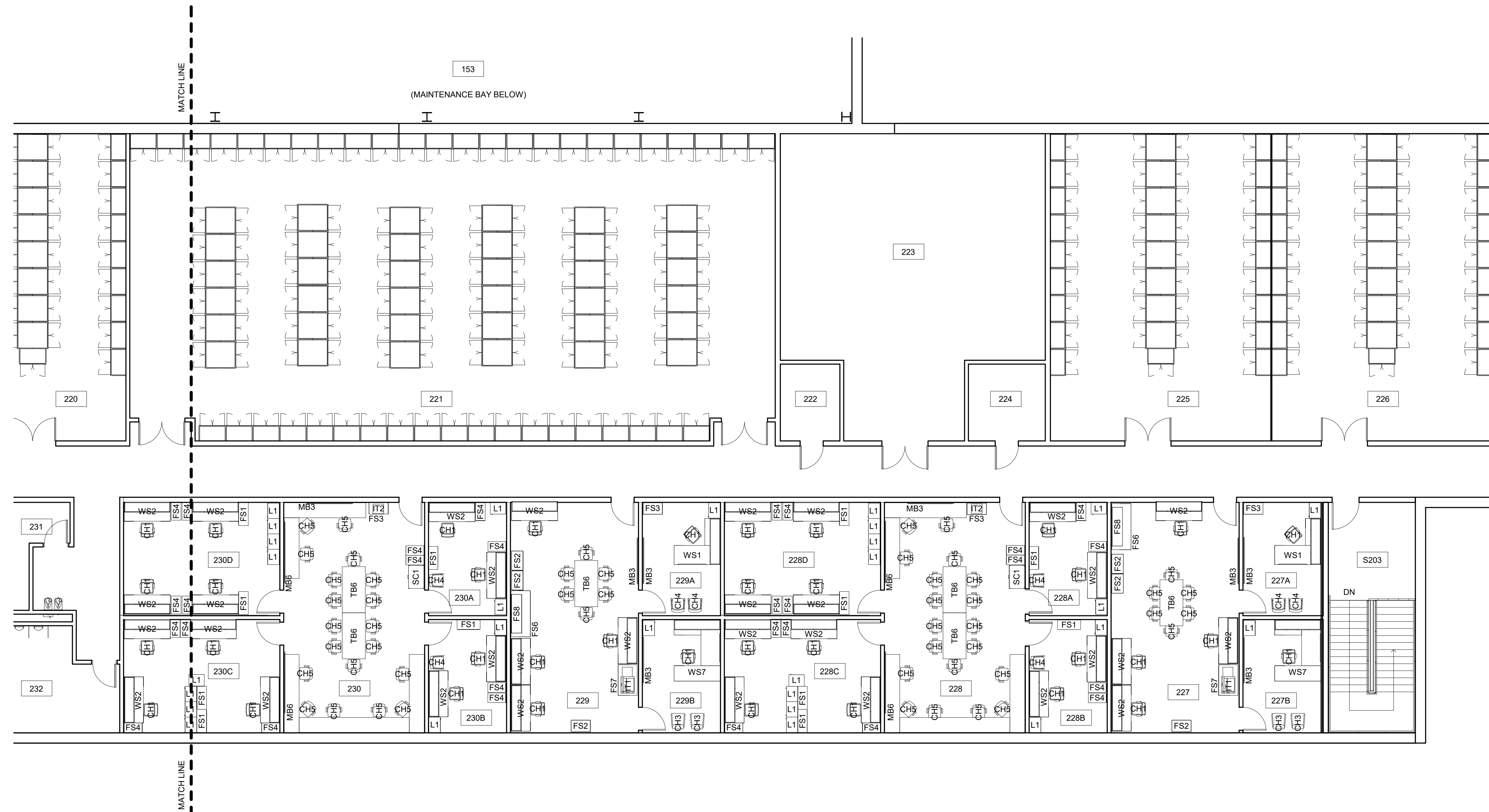
5

D

C

B

A



1 SECOND FLOOR PLAN - PART "B"

I-108 1/8" = 1'-0"

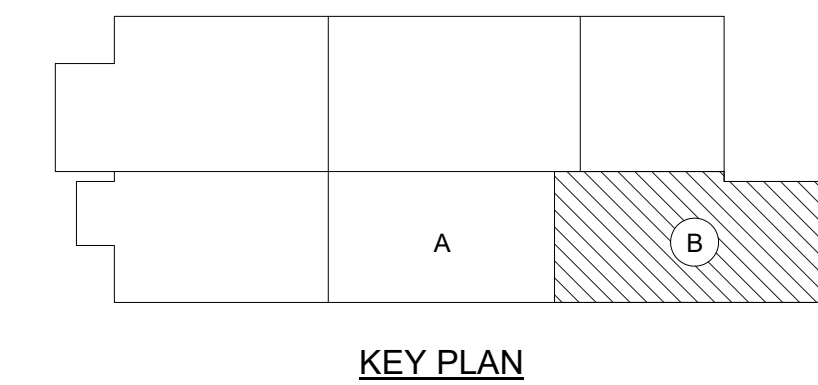
ROOM NO.	ROOM NAME
200	CORRIDOR
201	AC ORDERLY ROOM
201A	AC 1ST SERGEANT OFFICE
201B	AC COMMANDER OFFICE
202	AC PILOT WORKROOM
202A	AC TACTICAL OPERATIONS OFFICE
202B	AC AVIATION SAFETY OFFICE
202C	AC PLATOON OFFICE
202D	AC STANDARDIZATION OFFICE
203	BREAK ROOM
204	UNISEX REST ROOM
205	UNISEX REST ROOM
206	FLIGHT PLANNING
206A	SECURE PLANNING ROOM
207	ELECTRICAL ROOM
208	TELECOMM ROOM (TR)
209	MECHANICAL ROOM
210	AVIATION LIFE SUPPORT EQUIPMENT STORAGE (ALSE)
211	AVIATION LIFE SUPPORT EQUIPMENT SHOP (ALSE)
212	JANITOR/FACILITY STORAGE
213	FLIGHT OPERATIONS
213A	FLIGHT OPERATIONS OFFICE
213B	FLIGHT OPERATIONS SECURE STORAGE
214	DISTRIBUTED/COMPUTER BASED TRAINING (DT/CBT) ROOM

ROOM NO.	ROOM NAME
215	PILOT LOCKER ROOM
216	CONFERENCE/TRAINING ROOM
217	CONFERENCE/TRAINING ROOM
218	SIPRNET ROOM
219	PILOT BRIEFING ROOM
219A	PILOT BRIEFING ROOM STORAGE
220	TA-50 LOCKER ROOM (AC)
221	TA-50 LOCKER ROOM (MC)
222	TELECOMM ROOM (TR)
223	MECHANICAL ROOM
224	ELECTRICAL ROOM
225	TA-50 LOCKER ROOM (AC)
226	TA-50 LOCKER ROOM (AC)
227	AC ORDERLY ROOM
227A	AC 1ST SERGEANT OFFICE
227B	AC COMMANDER OFFICE
228	AC PILOT WORKROOM
228A	AC TACTICAL OPERATIONS OFFICE
228B	AC AVIATION SAFETY OFFICE
228C	AC PLATOON OFFICE
228D	AC STANDARDIZATION OFFICE
229	AC ORDERLY ROOM
229A	AC 1ST SERGEANT OFFICE
229B	AC COMMANDER OFFICE

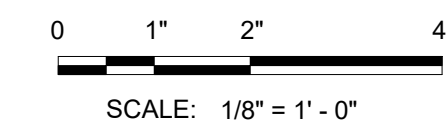
ROOM NO.	ROOM NAME
230	AC PILOT WORKROOM
230A	AC TACTICAL OPERATIONS OFFICE
230B	AC AVIATION SAFETY OFFICE
230C	AC PLATOON OFFICE
230D	AC STANDARDIZATION OFFICE
231	WOMEN'S RESTROOM
232	MEN'S RESTROOM
233	TELECOMM ROOM (TR)
S201	STAIR 1
S202	STAIR 2
S203	STAIR 3

NOTES:

1. DELINEATES EQUIPMENT OR WORK AREA
2. VENDING MACHINE OR REFRIGERATOR AREA
3. SAFETY EQUIPMENT CLEARANCE AREA



GRAPHIC SCALE:



US Army Corps of Engineers
MOBILE DISTRICT

DESIGNED BY: JACOB R. GIBSON
DRAWN BY: GRIFIN SMITH
CHECKED BY: CHRIS SMITH
DATE: 08/27/2010
PROJECT NO.: 272200
PLOT DATE: 3/16/37 PM
SCALE: As Indicated
SIZE: 22" x 34"
FILE NAME: FCV21-108.DWG

SUBMIT DATE: AUGUST 2010
SOLICITATION NO.:
CONTRACT NO.:
FILE NUMBER: F211-10-13

DEPARTMENT OF THE ARMY
FACILITIES STANDARDIZATION PROGRAM
**ATTACK/ASSAULT BATTALION (AAB)
AIRCRAFT MAINTENANCE HANGAR**
FF&E PLAN - SECOND FLOOR - PART "B"

SHEET IDENTIFICATION
I-108
SHEET OF 0

NOTIONAL PLAN - NOT FOR CONSTRUCTION